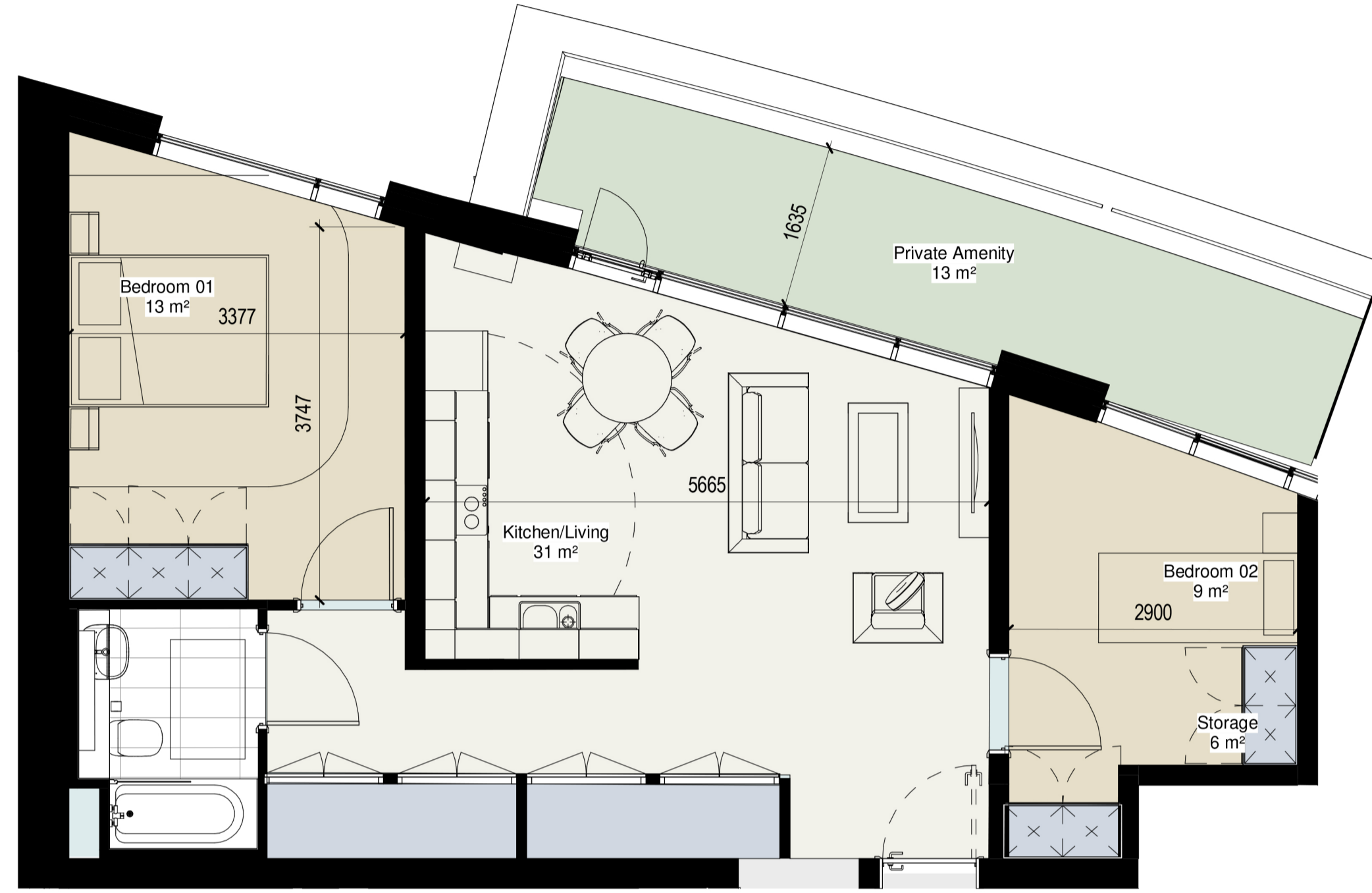


2 BED 3-PERSON TYPES

Minimum Floor Area - 63 sq.m



TYPE 2.6
1 : 50

Overall Floor Area	
Required	63 m ²
Provided	67 m ²



TYPE 2.7
1 : 50

Overall Floor Area	
Required	63 m ²
Provided	69 m ²

Sustainable Urban Housing: Design Standards for New Apartments (2023)

Minimum overall apartment floor areas

Studio	37 sq m (n/a)*
One bedroom	45 sq m (38 sq m)*
Two bedrooms (3 person)**	63 sq m (n/a)*
Two bedrooms (4 person)	73 sq m (55 sq m)*
Three bedrooms	90 sq m (70 sq m)*

* Figures in brackets refer to 1995 guidelines
** Permissible in limited circumstances

Minimum aggregate floor areas for living/dining/kitchen rooms, and minimum widths for the main living/dining rooms

Apartment type ***	Width of living / dining room	Aggregate floor area of living / dining / kitchen area*
Studio	4m**	30 sq m**
One bedroom	3.3 m	23 sq m
Two bedrooms (3 person)	3.6m	28 sq m
Two bedrooms (4 person)	3.6 m	30 sq m
Three bedrooms	3.8 m	34 sq m

* Note: An enclosed (separate) kitchen should have a minimum floor area of 6.5 sq. metres
** Note: Combined living/dining/bedspace, also includes circulation
*** Note: Variation of up to 5% can be applied to room areas and widths subject to overall compliance with required minimum overall apartment floor areas.

Minimum bedroom floor areas/widths***

Type	Minimum width	Minimum floor area
Studio	4m**	30 sq m**
Single bedroom	2.1 m	7.1 sq m
Double bedroom	2.8 m	11.4 sq m
Twin bedroom	2.8 m	13 sq m

* Note: Minimum floor areas exclude built-in storage presses that are contributing to storage space requirements
** Note: Combined living/dining/bedspace

Minimum aggregate bedroom floor areas

One bedroom	11.4 sq m
Two bedrooms (3 person)	13 + 7.1 sq m = 20.1 sq m
Two bedrooms (4 person)	11.4 + 13 sq m = 24.4 sq m
Three bedrooms	11.4 + 13 + 7.1 sq m = 31.5 sq m

Minimum storage space requirements

Studio	3 sq m
One bedroom	3 sq m
Two bedrooms (3 person)	5 sq m
Two bedrooms (4 person)	6 sq m
Three or more bedrooms	9 sq m

Minimum floor areas for private amenity space

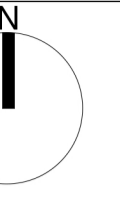
Studio	4 sq m
One bedroom	5 sq m
Two bedrooms (3 person)	6 sq m
Two bedrooms (4 person)	7 sq m
Three bedrooms	9 sq m

Minimum floor areas for communal amenity space

Studio	4 sq m
One bedrooms	5 sq m
Two bedrooms (3 person)	6 sq m
Two bedrooms (4 person)	7 sq m
Three bedrooms	9 sq m

Notes:
DO NOT SCALE FROM THIS DRAWING. USE FIGURED DIMENSIONS
IN ALL CASES. VERIFY DIMENSIONS ON SITE AND REPORT ANY
DISCREPANCIES TO THE ARCHITECTS IMMEDIATELY. THIS
DRAWING TO BE READ IN CONJUNCTION WITH THE ARCHITECTS
SPECIFICATION. © THIS DRAWING IS COPYRIGHT AND MAY ONLY
BE REPRODUCED WITH THE ARCHITECTS PERMISSION.

OSI License Number - AR 0052219
Projection / Spatial Reference:
Projection= IRENET95_Insh_Transverse_Mercator
Centre Point Coordinates:
X,Y= 718657.3699,734403.2446
Reference Index:
Map Series | Map Sheets
1:1,000 | 3263-02
1:1,000 | 3263-08
1:1,000 | 3263-07
1:1,000 | 3263-03
Vertical Datum:
MALIN HEAD



P01 | 18/20/23 | WM | Issued for Planning

Rev	Date	DRN	Description



Client Details:
Ruirside Developments Ltd.

Project Details:
PGATE
42A Parkgate Street, Dublin 8

Drawing Title:
Permitted Block B2 - 2 Bed (3 Person)
Apartment Types

Job No	Date	Scale@A1
P24-216D	27.02.25	1:50
Status	Drawn By:	
Planning	eob	
Purpose	Checked By:	
Planning Permission	RW	

Drawing Number	Revision
PGATE-RAU-ZZ-ZZ-DR-A-APT-34403	P02