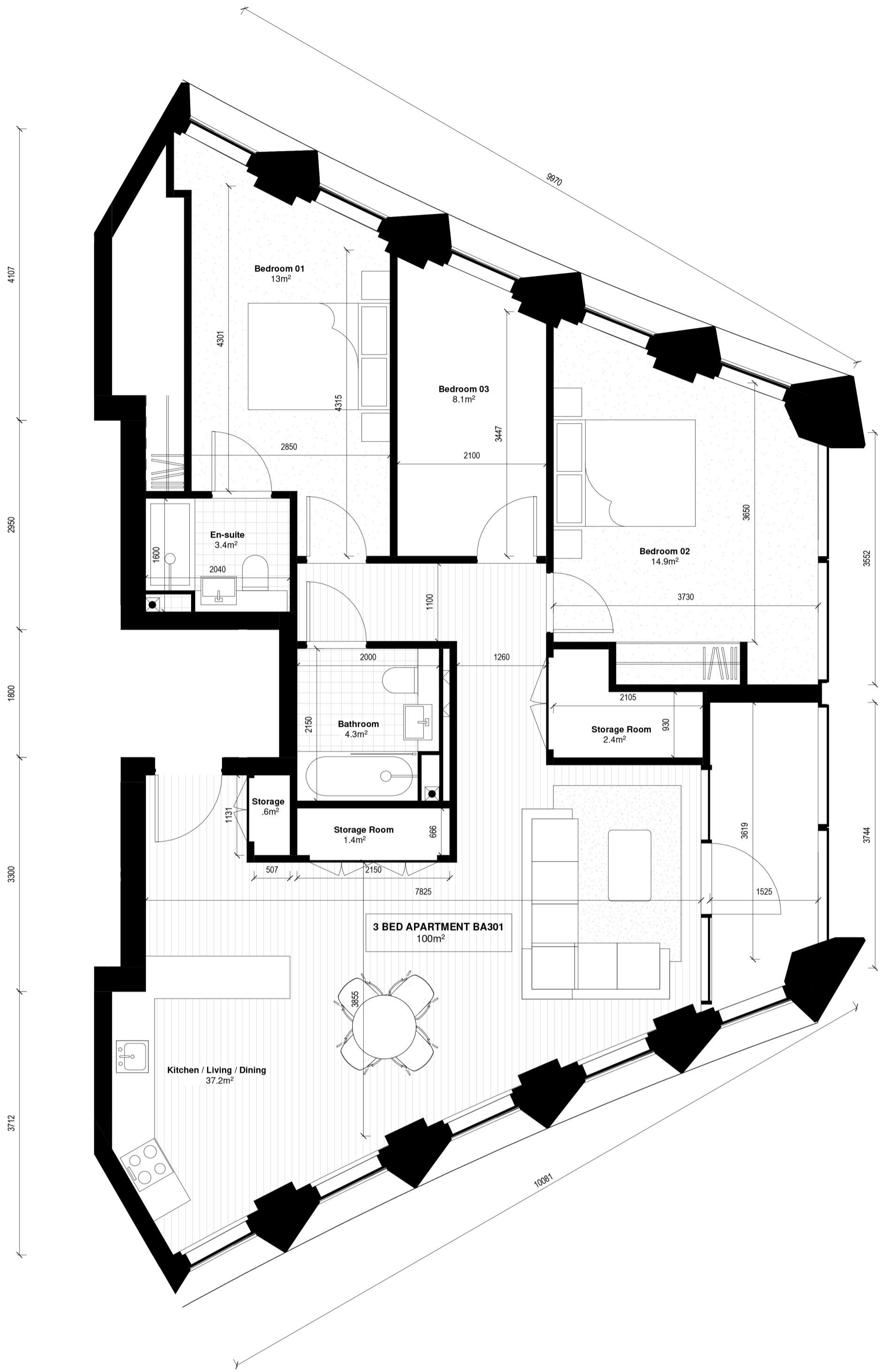


| Overall Floor Area |                    |
|--------------------|--------------------|
| Required           | 73m <sup>2</sup>   |
| Provided           | 74.7m <sup>2</sup> |

2 Bed - BA201 Floor Plan  
1 : 50



| Overall Floor Area |                   |
|--------------------|-------------------|
| Required           | 90m <sup>2</sup>  |
| Provided           | 100m <sup>2</sup> |

3 Bed - BA301 Floor Plan  
1 : 50

Notes:  
DO NOT SCALE FROM THIS DRAWING. USE FIGURED DIMENSIONS IN ALL CASES. VERIFY DIMENSIONS ON SITE AND REPORT ANY DISCREPANCIES TO THE ARCHITECT'S IMMEDIATELY. THIS DRAWING TO BE READ IN CONJUNCTION WITH THE ARCHITECTS SPECIFICATION. © THIS DRAWING IS COPYRIGHT AND MAY ONLY BE REPRODUCED WITH THE ARCHITECTS PERMISSION.

OSI License Number - AR 0052219  
Projection / Spatial Reference:  
Projection= IRENET95\_Irish\_Transverse\_Mercator  
Centre Point Coordinates:  
X = 715627.8859 734603.2446  
Reference Index:  
Map Series / Map Sheets  
1:1,000 3253-02  
1:1,000 3263-08  
1:1,000 3263-07  
1:1,000 3263-03  
Vertical Datum:  
MALIN HEAD

- GENERAL NOTE:**
- Area for each apartment type meets or exceeds minimum required area for Studio, 1-Bed or 2-Bed apartment types in all cases - **See HOA for details.**
  - Aggregate Kitchen / Living / Dining Area for each apartment type meets or exceeds minimum required area for Studio, 1-Bed or 2-Bed apartment types in all cases - **See HOA for details.**
  - Storage Area for each apartment type meets minimum required area for Studio, 1-Bed or 2-Bed apartment types in all cases. Where Built-in Wardrobe is included into storage area calculations, it is subsequently excluded from room area - **See HOA for details.**

|     |          |    |                    |
|-----|----------|----|--------------------|
| P02 | 01/06/21 | JB | Planning Issue     |
| P01 | 02/12/20 | DZ | Pre-Planning Issue |

| Rev | Date | DRN | Description |
|-----|------|-----|-------------|
|-----|------|-----|-------------|



Derry Mills,  
Derry Road  
Dublin 6, D06 Y0E3  
T: +353 (0)1 4687000  
W: www.reddyarchitecture.com  
E: info@reddyarchitecture.com

IN ASSOCIATION WITH

**Glenn Howells Architects**  
Birmingham London glennhowells.co.uk

Glenn Howells Architects  
321 Barford Street  
Birmingham B5 6ET

T: +44 (0)121 666 7640  
W: www.glennhowells.co.uk  
E: mail@glennhowells.co.uk

Client Details:  
Ruirside Developments Ltd.

Project Details:  
PGATE  
42A Parkgate Street, Dublin 8

Drawing Title:  
Permitted Block A - 2 & 3 Bed Apartment Types

|                |                        |          |
|----------------|------------------------|----------|
| Job No         | Date                   | Scale@A1 |
| P18-107D       | 25/02/25               | 1 : 50   |
| Status         | Drawn By:<br>D. Zubiak |          |
| Purpose        | Checked By:<br>RW      |          |
| Drawing Number |                        | Revision |

PGATE-RAU-ZZ-ZZ-DR-A-APT-34406 P02